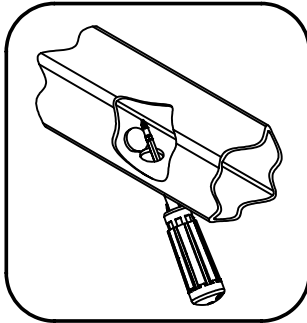


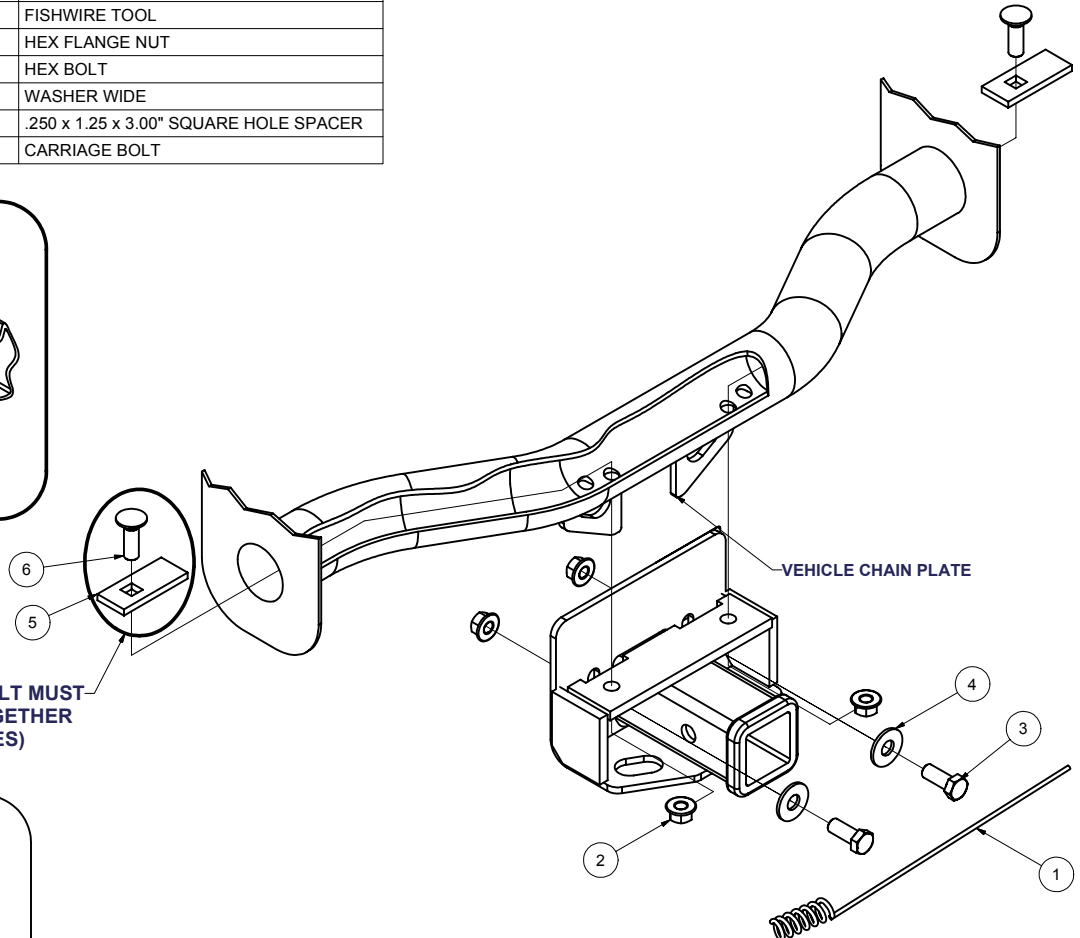
GROSS LOAD CAPACITY WHEN USED AS A WEIGHT CARRYING HITCH: 5000 LBS. TRAILER WEIGHT & 500 LBS. TONGUE WEIGHT.
GROSS LOAD CAPACITY WHEN USED AS A WEIGHT DISTRIBUTION HITCH: 5500 LBS. TRAILER WEIGHT & 550 LBS. TONGUE WEIGHT

*****DO NOT EXCEED VEHICLE MANUFACTURER'S RECOMMENDED TOWING CAPACITY.*****

Parts List			
ITEM	QTY	PART NUMBER	DESCRIPTION
1	1	1/2"	FISHWIRE TOOL
2	4	HFN 1213	HEX FLANGE NUT
3	2	1/2-13 x 1 1/4	HEX BOLT
4	2	1/2"	WASHER WIDE
5	2	CM-SP19	.250 x 1.25 x 3.00" SQUARE HOLE SPACER
6	2	1/2-13 x 1 1/2	CARRIAGE BOLT



SLUG REMOVAL DIAGRAM



SPACER AND BOLT MUST
BE PULLED TOGETHER
(BOTH SIDES)

HITCH WEIGHT: 11 LBS.

INSTALL TIME: 30 MINUTES

INSTALL NOTES:

DRILLING REQUIRED
FISHWIRE FASTENERS

INSTALLATION STEPS

- 1) If present, remove slugs using a screw driver as shown. These must be removed to provide clearance for installation hardware.
- 2) Raise hitch into position over existing vehicle chain plate.
- 3) Mark and center punch holes on bumper support tube.
- 4) Drill center punched holes using a 5/8" drill.
- 5) Assemble carriage bolts and spacers, fishwire both through ends of bumper support tube and out drilled holes, as shown.
- 6) Raise hitch into position over carriage bolts and secure with flange nuts. Install remaining hex bolts and washers through existing slots in vehicle chain plate and secure with flange nuts, as shown.
- 7) Torque all 1/2" fasteners to 75 lb-ft.

PERIODICALLY CHECK THIS RECEIVER HITCH TO ENSURE THAT ALL FASTENERS ARE TIGHT AND THAT ALL STRUCTURAL COMPONENTS ARE SOUND.